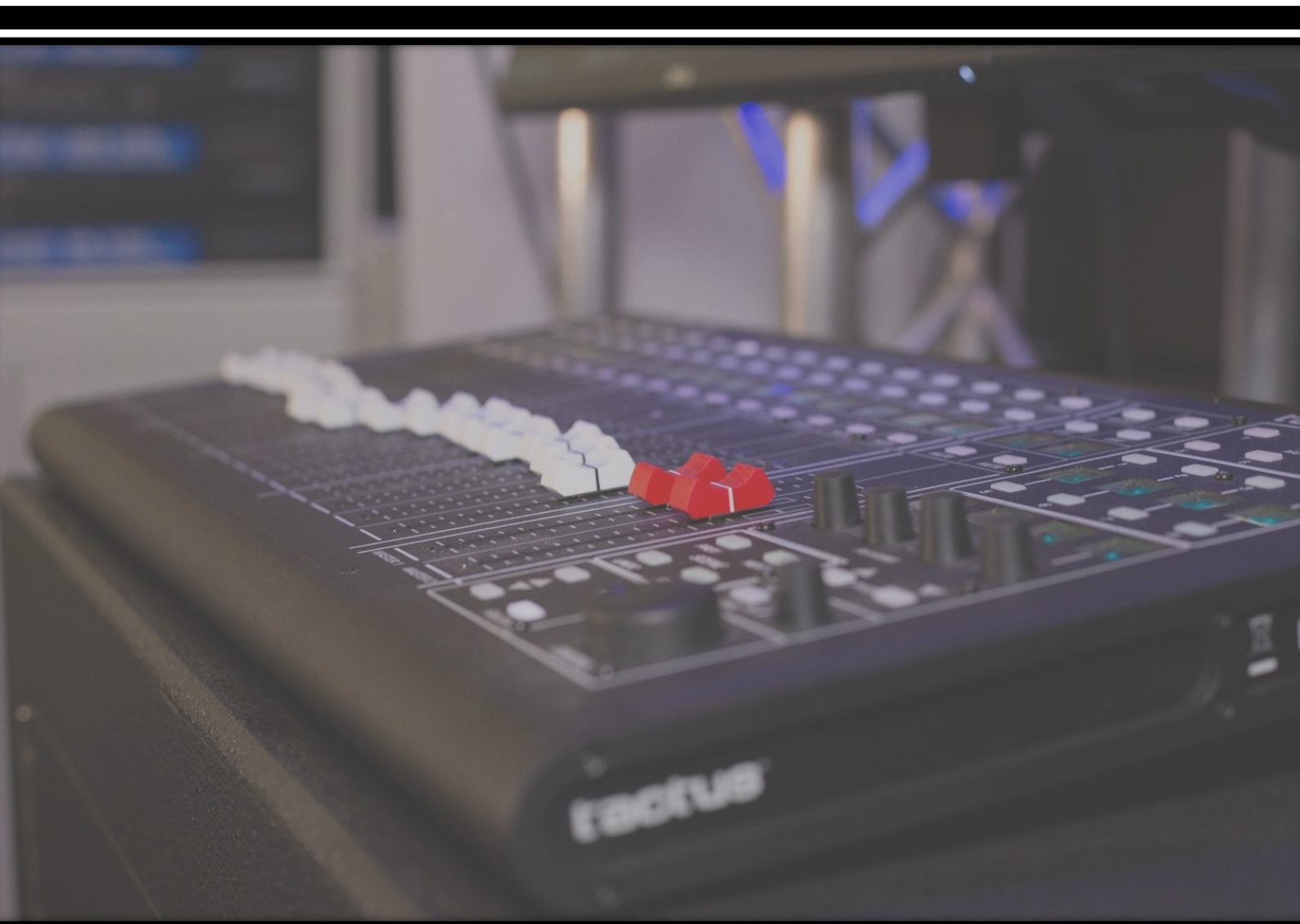


tactus™

PROFESSIONAL DIGITAL MIXING SYSTEM

Tactus.Control MIDI Control Support for Waves eMotion LV1 v12



CREST  AUDIO®

Introduction

The Tactus.Control motorized fader surface from Crest Audio has been adapted and engineered to support the MIDI control protocol now required by Waves LV1 v12 software. Tactus.Control users can now enjoy the new features and benefits that come with the embedded MIDI implementation combined with the advantages Waves eMotion LV1 v12 software provides.

Crest Audio's RATC protocol for the Tactus.Control is not supported beyond LV1 v9. Users that wish to use the Tactus.Control with LV1 v10 and upwards will need to switch from RATC to MIDI control.

This document will take you through the upgrade process from RATC to MIDI software in a step by step guide.

There are 4 parts to this document;

1. Firmware update procedure
2. Label transfer set placement for Hardware
3. Driver setup in Waves eMotion LV1
4. Known Issues

In addition there will be a series of video shorts released soon which explain all of the new user features and functionality under the new MIDI protocol, please visit;

<https://peaveycommercialaudio.com/videos/>

Note: Authorised Peavey Commercial Audio Dealers and International Distributors will communicate with their customers regarding new sales purchases of the Tactus.Control to determine which protocol the unit should ship with.

- In case of the RATC protocol a label transfer set will be provided in the carton with the product to facilitate a future update to MIDI.

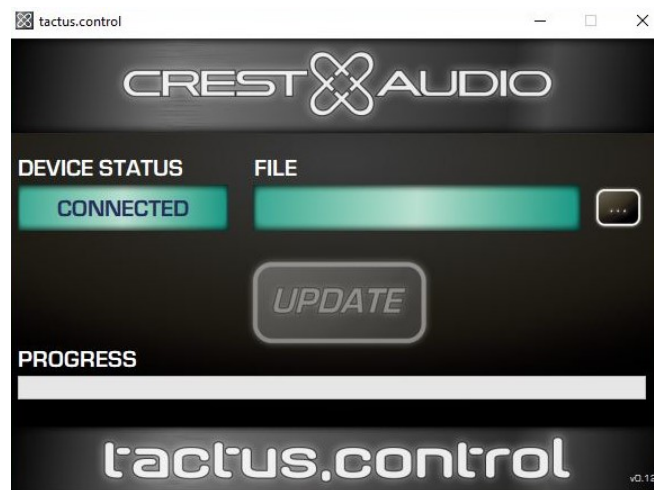
- In case of the MIDI protocol the dealer/distributor may affix the label transfer set on request as illustrated in section 2 of this document or will be supplied in the shipping carton.

1. Firmware Update Procedure

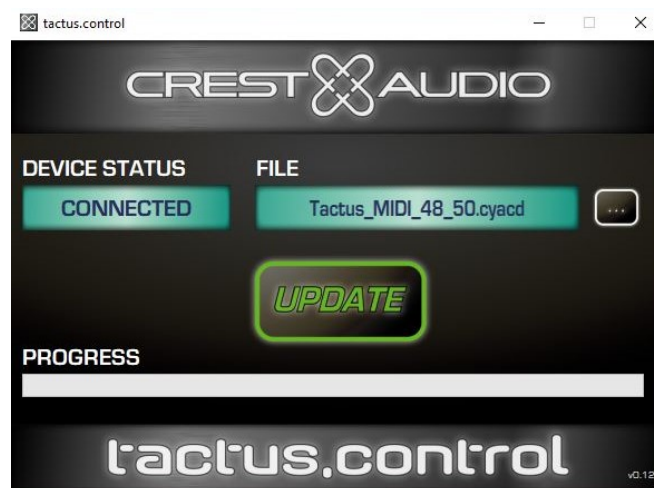
This section will walk you through the necessary steps required to update your Tactus.Control unit(s) for use with Waves eMotion LV1 v10-12 via MIDI.

- 1.1** Using a Windows based PC connected to the Internet, browse to <https://peaveycommercialaudio.com/software/> navigate to the 'Tactus' drop-down menu and download the 'Tactus Control Updater (Windows)' and 'Tactus Control Firmware 0.48.0.50 Beta' archives.

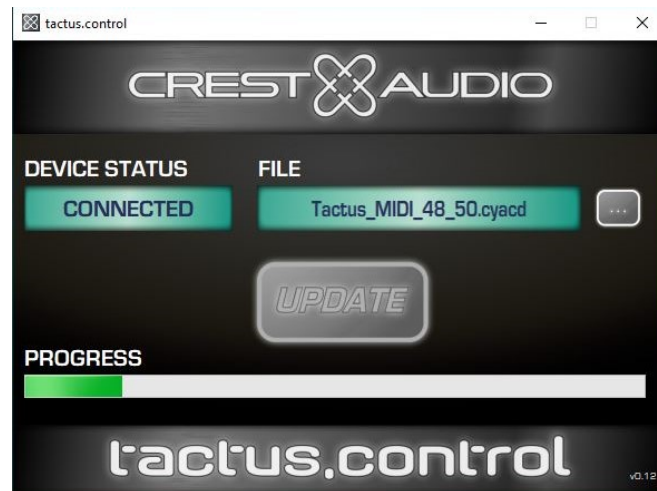
- 1.2 Power down your Tactus.Control product(s) and disconnect the USB connection to the Windows PC.
- 1.3 Locate the downloaded Tactus.Control Updater Zip file and unzip the archive using Windows Explorer or a file management tool such as WinZip. Install the application after Tactus_Control_Updater.exe has been extracted to the folder of your choice.
- 1.4 Re-connect the Tactus.Control to the PC via the USB cable and launch the update utility After the Installation is complete.
- 1.5 Locate the downloaded Tactus.Control 48.50 Beta Firmware Zip file and unzip the archive using Windows Explorer or a file management tool such as WinZip.
- 1.6 While holding/pressing the 'Control' wheel on the Tactus.Control, power the unit ON to enter FW update mode. The control surface will now display 'WAIT FOR FILE FROM CMPTR' over the scribble strips and should show as 'Connected' Status in the Utility software.



- 1.7 Within the Update Utility, click on the three dots (Ellipsis) to the right of the File window and navigate to the location where the firmware file 'Tactus_MIDI_48_50_Beta.cyacd' is stored, select the file then click Open.



- 1.8 Once the file is loaded into the Utility, re-check that the Utility still shows a 'connected' status and also the control surface still shows the above 'WAIT FOR FILE...' on its scribble strips - then click 'Update' in the Utility followed by OK on the Tactus surface boot loader dialog box that is presented.



- 1.9 The Tactus.Control surface should reboot automatically once the update utility has finished transferring the file. Normal update process duration takes approx 2 minutes and the surface scribble strips will show various messages during this operation.

Warning: Do **NOT** power OFF the unit or remove any USB devices during any data transfer processes.

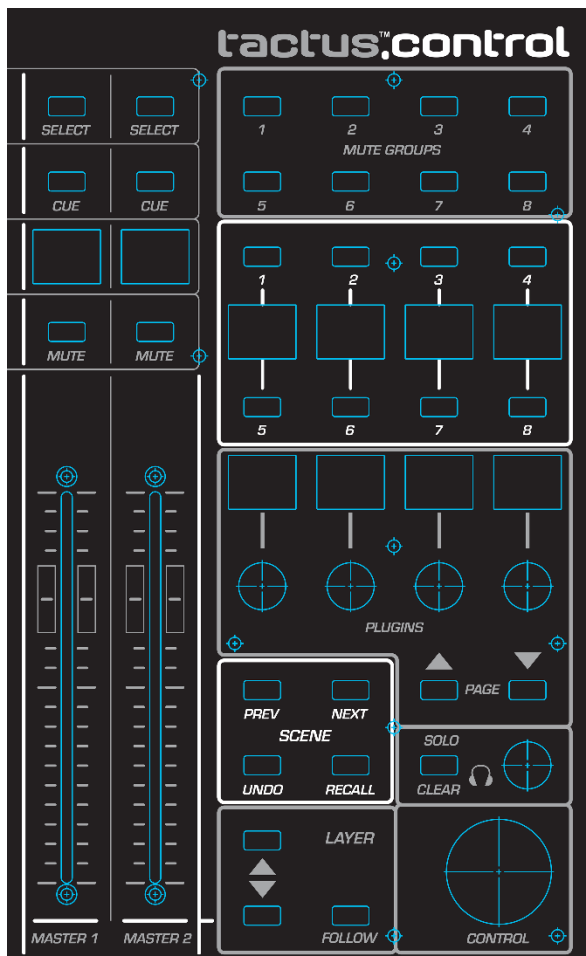
- 1.10 You may find that the surface will reboot before the transfer appears to have finished, this is natural and everything should be left alone until the update Utility displays its final message with 'success' or 'failed'.
- 1.11 After a successful update - you can verify the FW revision on the surface by checking the version number that is displayed in the left most Plug-in scribble strip of the Master Section. This should briefly display '48.50' while the surface powers On and before it returns all faders to their lowest position from the flying faders boot sequence.
- 1.12 If this shows any number lower than '48.50' this would indicate an unsuccessful FW update. To resolve, power down all devices and restart the host PC before repeating the process. Once restarted, ensure that the Tactus.Control Surface is powered ON and is in FW update mode for at least 20 seconds before launching the Update Utility.
- 1.13 If you continue to experience issues with the FW not updating or the unit fails after a reboot please contact support by email with subject 'Tactus.Control MIDI'
pcasupport.amer@peavey.com Americas
pcasupport.apac@peavey.com Asia Pacific
pcasupport.emea@peavey.com Europe, Middle East and Africa

2. Label Transfer Set Placement for Hardware

Some of the features and functions around the master section on the Tactus.Control change with the update to MIDI and as such requires a re-labelling on some of the controls. We will provide a transfer kit on request to any current Tactus.Control users who wish to switch to the MIDI protocol.

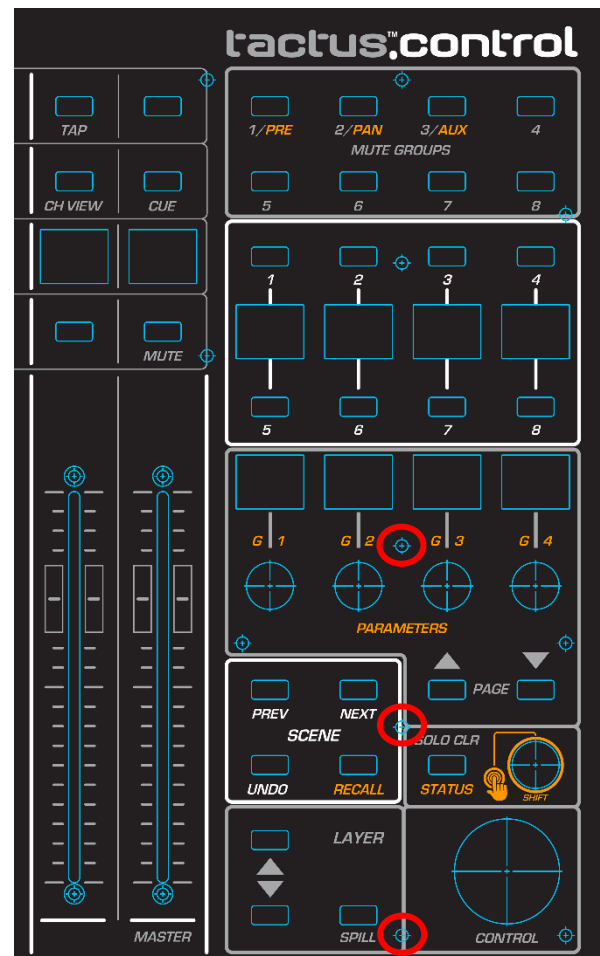
Please refer to the 2 images below.

Image 1



*RATC Protocol format for Waves eMotion LV1 v9

Image 2



*MIDI Protocol format for Waves eMotion LV1 v10-12

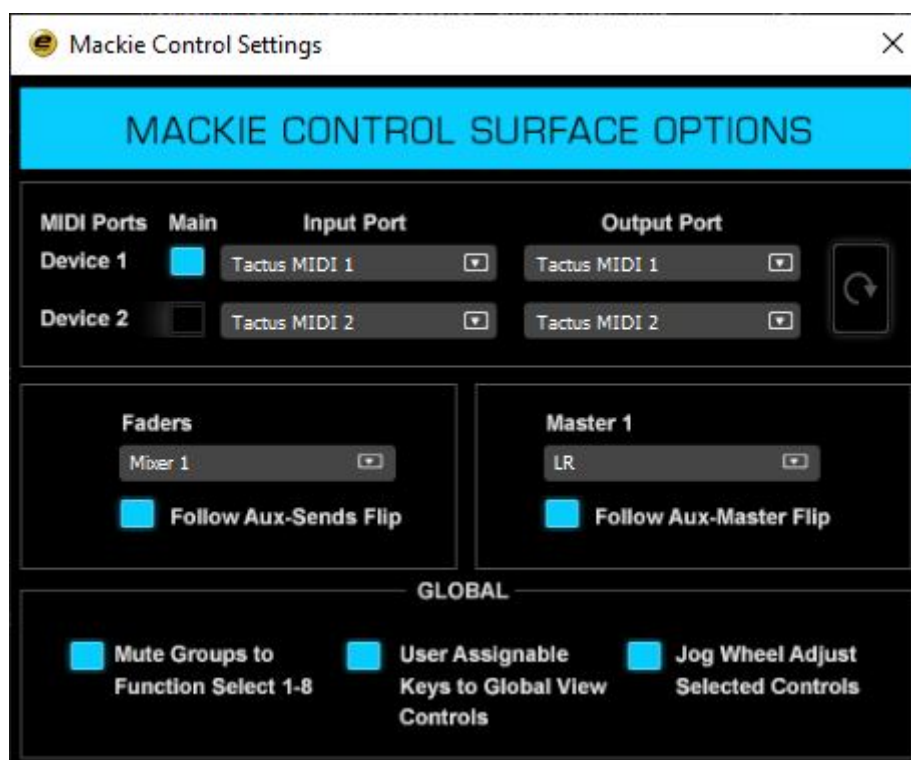
- 2.1 To update the labelling on your Tactus.control product for MIDI compatibility first you must loosen the Torx T8 screws circled in red on 'Image 2' enough for the stickers to sit and rest under.
- 2.2 Refer to image 2 above and affix the stickers accordingly using the transfer kit provided.
- 2.3 Ensure that you use the blank transfers to cover the unused controls referencing both Images above.
- 2.4 Once the transfers are correctly affixed, please fasten the Torx T8 screws back down to their resting position.

3. Driver Setup in Waves eMotion LV1

Now that your Tactus.Control has been loaded with MIDI Firmware the next step is to connect to Waves LV1 and setup the correct software drivers in LV1 for proper operation.

It is recommended that the Tactus.Control surface be connected to the LV1 host PC and powered On before launching the LV1 application. This allows the Windows subsystems to correctly setup the USB part of the surface in preparation for LV1 / Tactus.Control surface operations.

- 3.1 With the Surface attached to the LV1 Host, powered On and LV-1 successfully launched, navigate to the 'Setup' tab of LV1 and select the 'System Inventory' page from the left most options.
- 3.2 You now need to add the correct driver to an available slot in the Controls rack on the right hand side. (Page 22 | eMotion LV1 - User Guide).
- 3.3 Within your chosen Rack slot, choose the 'Mackie' option from the list of available options.
- 3.4 From within the driver options you now need to choose Tactus MIDI 1 for input and output ports of Device 1, and Tactus MIDI 2 for inputs and outputs of Device 2.
- 3.5 In order to gain full functionality of all the new updated firmware features it is recommended to 'Enable' the 'Follow Aux-Send Flip' and 'Follow Aux-Master Flip' options along with all of the 'Global' options. [Mute Groups to Function Select 1 - 8, User Assignable keys to Global View Controls, Jog Wheel Adjust Selected Controls]



- 3.6** Once these options are all set the control surface should now populate with correct channel strip labels according to the selected layer. You will also see the Tap Tempo feature become active on the surface.
-

4. Known Issues

These are some of the known issues found while testing the '48.50 Beta' MIDI code with the Waves eMotion LV1 and Tactus.Control. Issues will be addressed in a future version.

- 4.1** The Tactus.Control MIDI update does not currently support Apple mac OS. Windows 10 installed on an Apple mac device using the 'Boot Camp' utility should work.
- 4.2** 2 or 3 faders do not quite sit at -infinity following power up and POST (Power On Self Test) of the Tactus.Control.
- 4.3** From time to time under operation control lag (delay) can be observed on LV1 when 1 or more faders are moved on the Tactus.Control surface.
- 4.4** From time to time LV1 may not track and update a fader(s) movement from the Tactus.Control, either a large delay results or the gestured fader(s) won't update until the fader(s) are re-gestured on the surface.
- 4.5** Sometimes fader #5 can misbehave and become unresponsive or land in a undesired position, moving through layers or re-gesturing the fader usually corrects this.
- 4.6** When using the ALT+Tap fader function from LV1 to send the fader(s) to unity gain they always align correctly in LV1 but not always on the physical Tactus.Control, faders can reside in a subtle + or – position from Unity.

Note: The above behaviour seen in 4.3 to 4.5 are not exclusive to the Tactus.Control, other Control Surfaces for Waves LV1 in the market currently suffer from these conditions to varying degrees and frequency.



www.peaveycommercialaudio.com



Crest Audio 5022 HWY 493N. Meridian, MS 39305